

MST Institute, a nonprofit organization solely dedicated to the hallmarks of evidence-based practice, specifically for the MST treatment model, offers valuable outcomes data collection assistance through its **follow-up interview service**.

This service is available to any licensed MST team wanting to capture the outcomes data and assess sustainability of changes shortly after discharge.

The follow-up interview enables MST programs to determine whether a youth is:

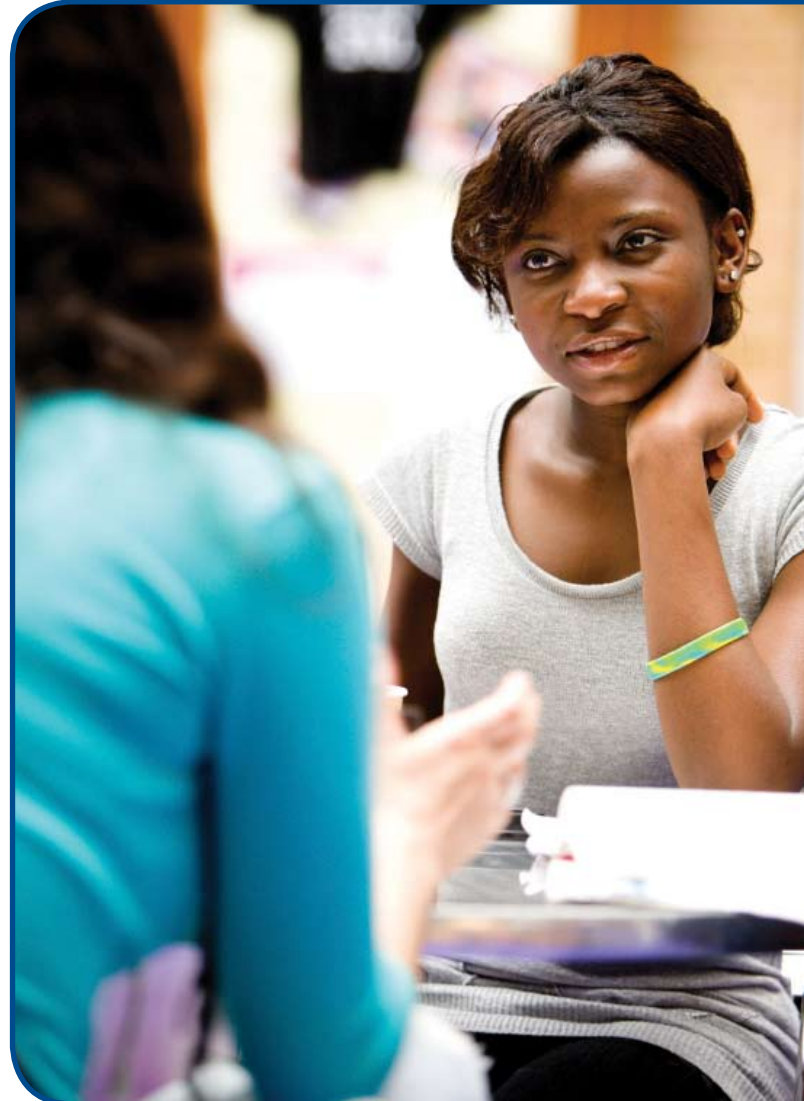
- at home
- in school or a vocational setting
- working
- involved with the law

In addition, the interview includes several reliable and valid measures used in MST clinical trials that assess youth and family factors that typically change during treatment and are associated with better ultimate outcomes for youth. **These include:**

- family functioning
- parental monitoring practices
- youth conduct problem behaviors

Benefits of Interview Service

- supports comparison of team outcomes with published findings
- assesses sustainability of changes following discharge
- allows more consistent monitoring of outcomes
- provides background information for changes focused on performance improvement
- develops better understanding of contributors to change
- helps agencies assess the effectiveness of the MST team



Pricing

MST Institute offers three interview options:

- **2-interview option**
(6- and 12-month after first visit)
- **3-interview option**
(6-, 12- and 18-month after first visit)
- **4-interview option**
(6-, 12-, 18- and 24-month after first visit)

Note: Pricing is based on volume and option selection.

Enrollment Volume Families/Year	NP Discount Level	Cost Per Interview		
		2-Interview Package <i>(12-month period)</i>	3-Interview Package <i>(18-month period)</i>	4-Interview Package <i>(24-month period)</i>
List Price	N/A	\$50	\$41.67	\$37.50
100 Families	0%	\$50	\$41.67	\$37.50
200 Families	5%	\$47.50	\$39.58	\$35.63
300 Families	10%	\$45	\$37.50	\$33.25
400 Families	15%	\$42.50	\$35.42	\$31.88
500 Families	20%	\$40	\$33.33	\$30.00
600 Families	25%	\$37.50	\$31.25	\$28.13
700 Families	30%	\$35	\$29.17	\$26.25
800+ Families	35%	\$32.50	\$27.08	\$24.38

After an initial setup fee of \$500, programs will be invoiced for a rate per family. For example, a program enrolling 100 families selecting the 2-interview option would be charged \$100 per family. Alternatively, a program enrolling 300 families using the 4-interview option would be charged \$133 per family.

Contact

For information about MST Institute’s follow-up interview service, how it works, pricing and benefits, contact Molly Brunk at molly.brunk@mstservices.com.